

Sculpture in the City 2020

New Works for Consideration

February 2020



SCULPTUREINTHECITY

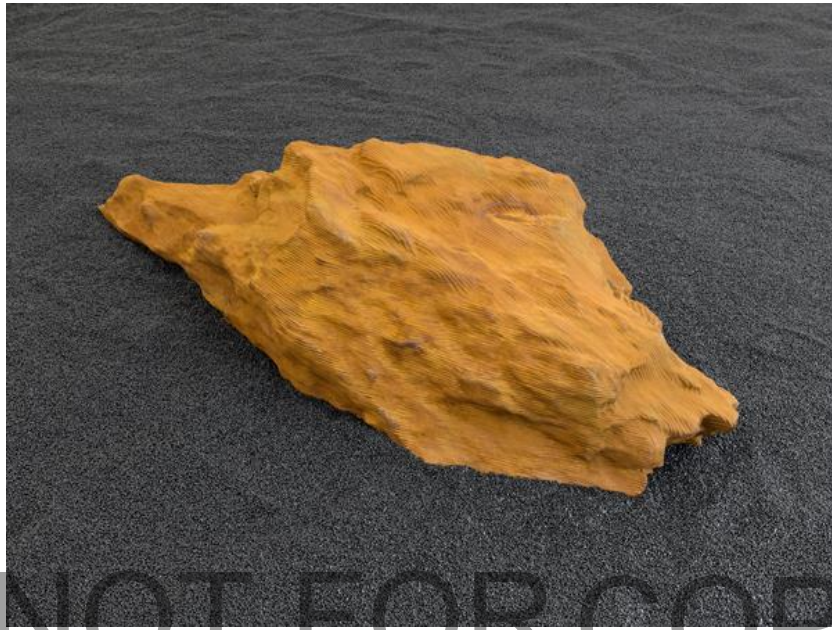


Title	Mori Chandelier
Artist	Ai Weiwei
Date	2009
Material	55,000 pieces of crystal
Dimensions	700 x 450.1 x 225 cm
Weight	Surface weight: 850kg Crystal weight: 520kg
Location	UK

Title	Silent Agitator
Artist	Ruth Ewan
Date	2018/2019
Material	Painted steel and glass
Dimensions	2.84 x 1.37 x .5 m
Weight	75kg
Location	New York, USA



Untapped Cities by Michelle Young



Title	Burial
Artist	Alice Channer
Date	2016
Material	Cast corten steel
Dimensions	80 x 107 x 237 cm each
Weight	243 kg each
Location	Germany



Title	Stone Butch (Duo)
Artist	Rosanne Robertson
Date	2020
Material	Glass reinforced jesmonite (AC830 with UV stable pigments), fibreglass and steel sculpture with reinforced steel mesh central core and painted steel rod legs
Dimensions	140 x 140 x 200cm
Weight	140kg
Location	Cornwall, UK



Title	Metal Man – Deeper Together, Deep Travel Ink. NYC 2018
Artist	Laure Prouvost
Date	2018
Material	HD video and metal sculpture in two parts
Dimensions	165.5 x 185 x 121 cm